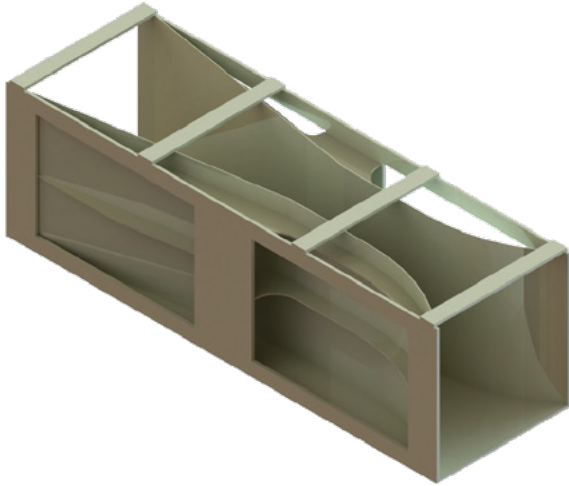


# VENTURI CHANNELS

HYDRAULIC MODELLER FOR FLOW MEASUREMENT IN RECTANGULAR CHANNEL



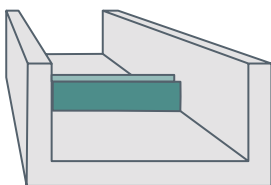
## FEATURES

- Dedicated primary measurement device for channels
- For installation in rectangular-section ducts
- Flow rate:  $> 1 \dots 2250 \text{ m}^3/\text{h}$
- Low-pressure drops
- Suitable for installation in pre-existing rectangular channels
- Design prevents debris build-up

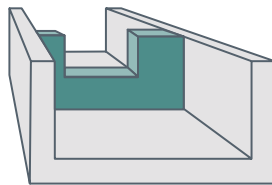
## MEASURING RANGES

Model	Q.min $\text{m}^3/\text{h}$	Q.max $\text{m}^3/\text{h}$
BS 150	1	50
BS 200	2	55
BS 300	3	150
BS 400	10	310
BS 500	20	500
BS 600	25	850
BS 800	50	1400
BS 1000	60	2250

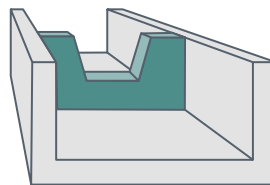
## WEIRS



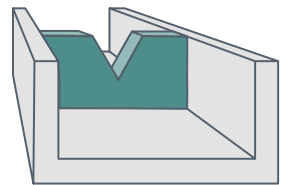
Rectangular weir  
without side restraints



Regular weir  
with side restraints



Trapezoid weir



Triangular weir